

# 30x30 CALIFORNIA



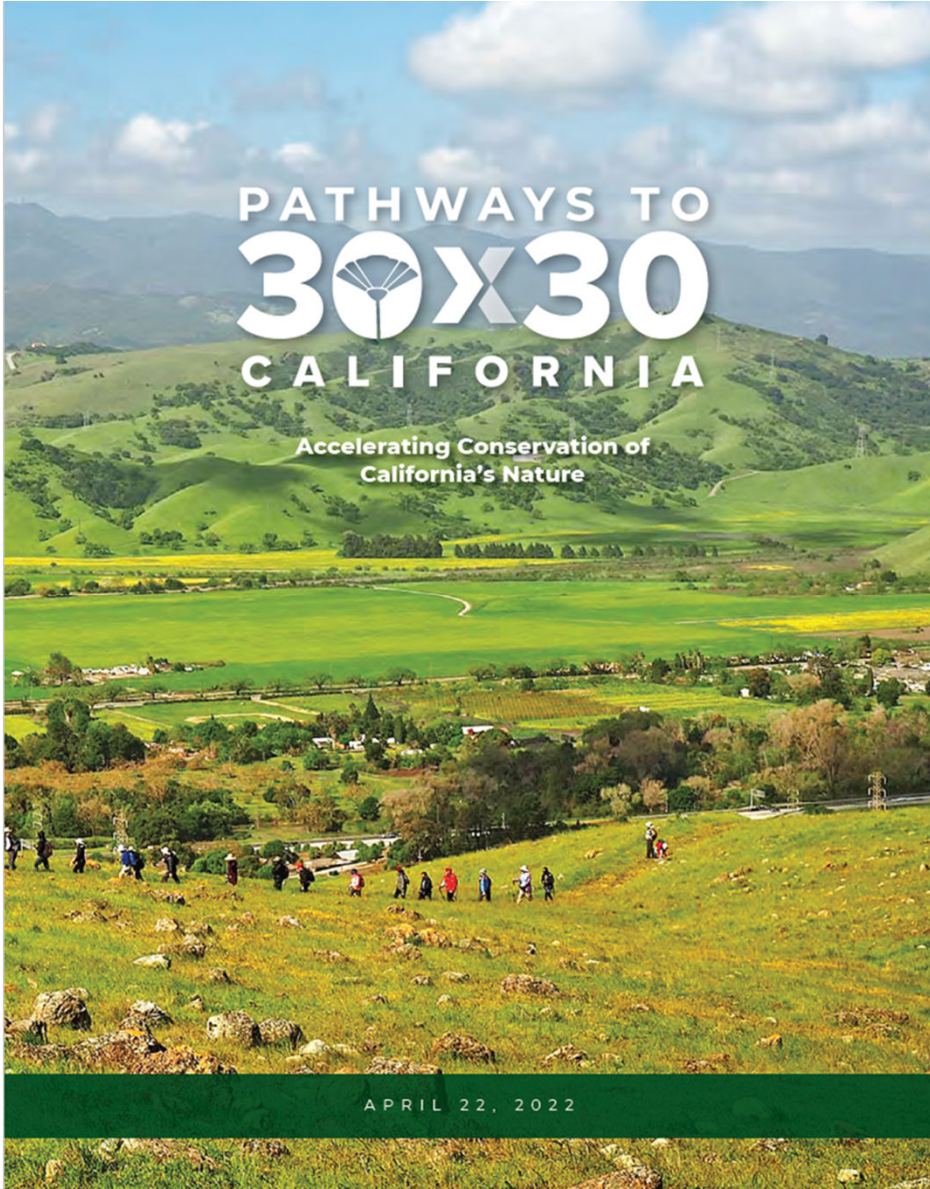
JENNIFER NORRIS, Ph.D.,  
Executive Director, California Wildlife Conservation Board



# Nature Based Solutions Executive Order (N-82-20)

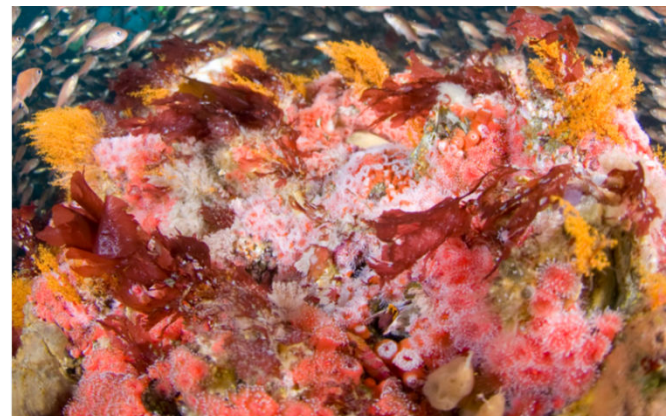
Commitment to conserve 30 percent  
of lands and coastal waters by 2030





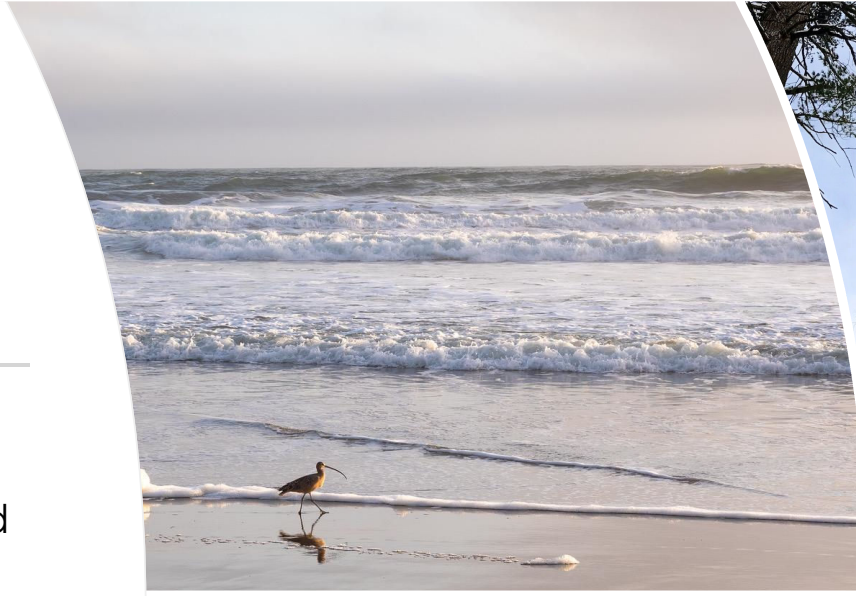
# 30x30 Conservation Areas

“Land and coastal water areas that are **durably** protected and managed to sustain functional ecosystems, both intact and restored, and the **diversity** of life that they support.”



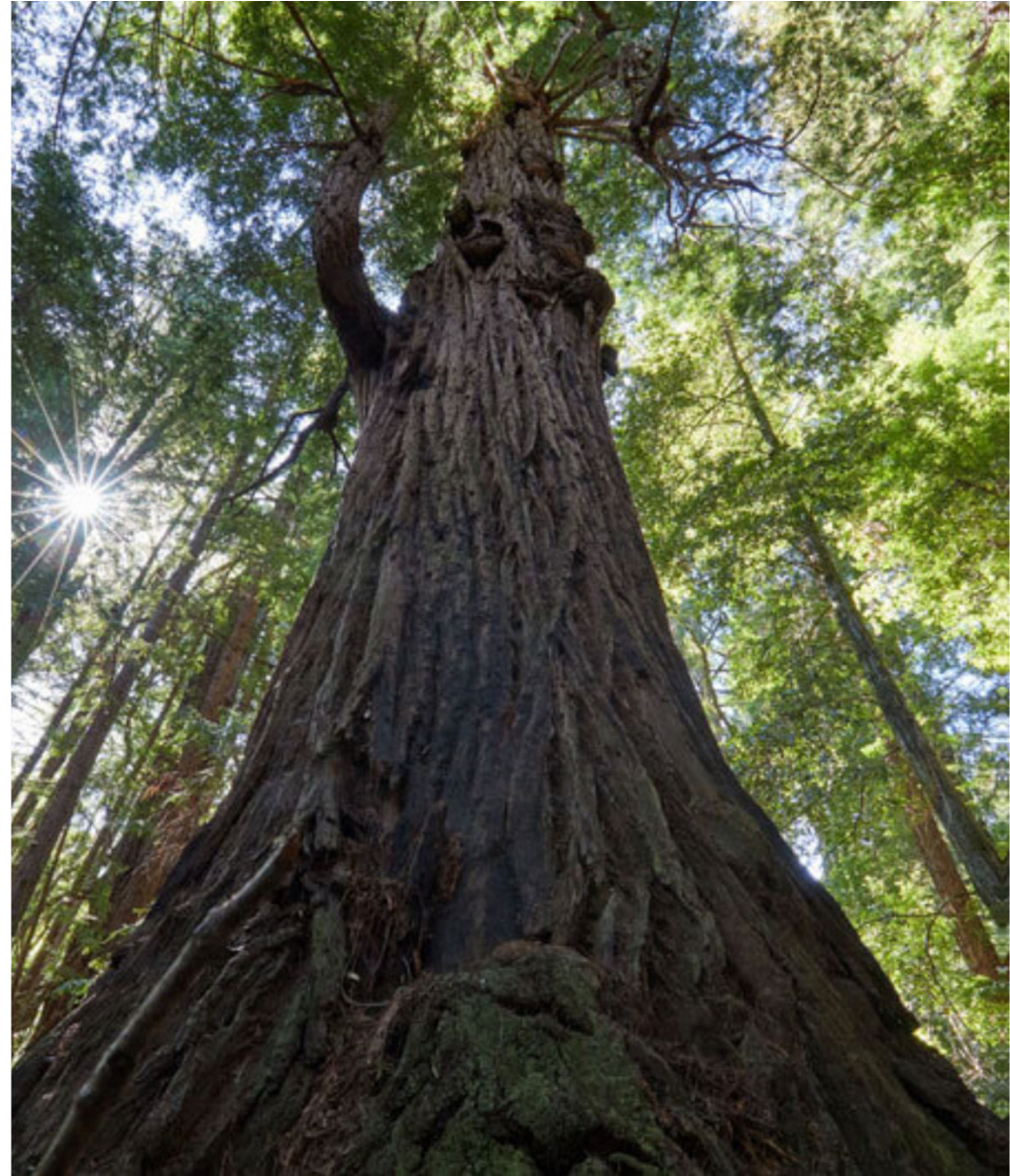
## 30x30 Areas

- Dedicated conservation areas
  - Recreation lands and open spaces
  - Working lands
  - Marine Protected Areas
- 
- \*\* All conservation is important



# Conservation Framework

- Key Objectives and Priorities
  - Protect and Restore Biodiversity
  - Expand Access to Nature
  - Mitigate and Build Resilience to Climate Change





## CALIFORNIA'S NATURE-BASED SOLUTIONS CLIMATE TARGETS

AS REQUIRED BY ASSEMBLY BILL 1757 (2022, C. GARCIA)



ADMINISTRATION OF GOVERNOR GAVIN NEWSOM  
APRIL 22, 2024

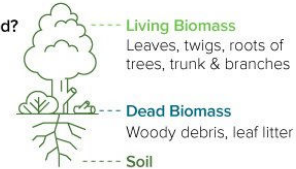
# Carbon Storage in Earth's Ecosystems

Achieving net-zero by 2050 depends on the Earth's natural carbon sinks.

Forests play a critical role in regulating the global climate. They absorb carbon from the atmosphere and then store it, acting as natural carbon sinks.

## Where is Carbon Stored?

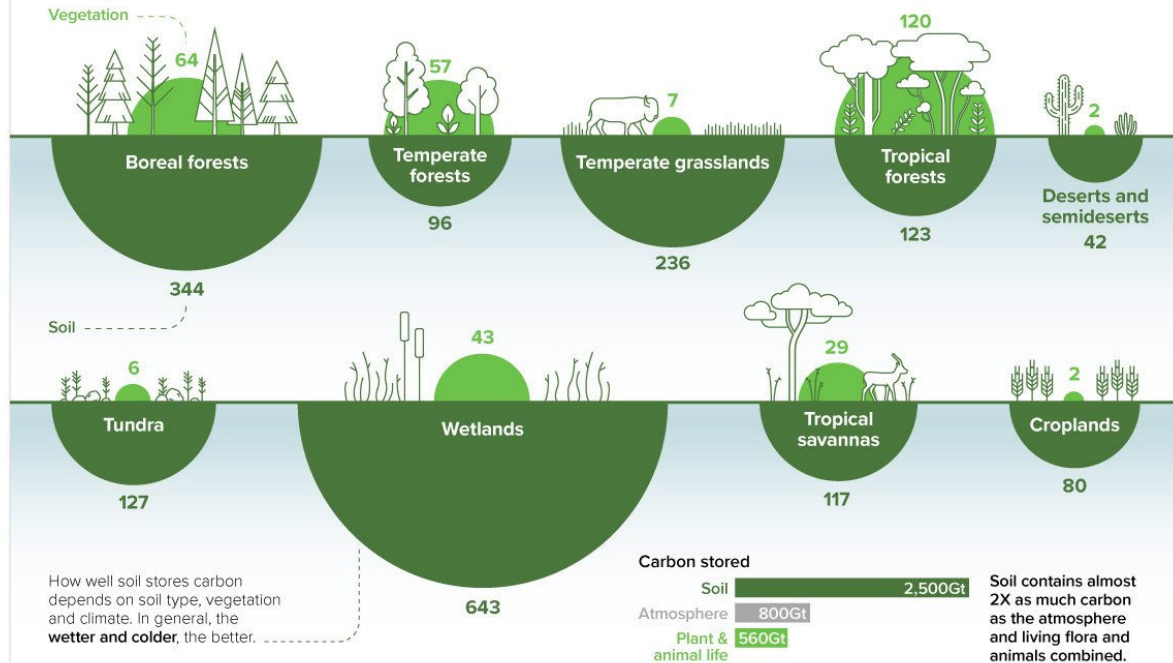
There are various carbon pools in a forest ecosystem.



## Carbon Storage Tonnes of Carbon per Hectare\*

The world's forests absorb around **15.6 gigatonnes** of CO<sub>2</sub> each year. That's around 3X the annual CO<sub>2</sub> emissions of the United States.

However, around **8.1 gigatonnes of CO<sub>2</sub>** leaks back into the atmosphere due to deforestation, fires and other disturbances.



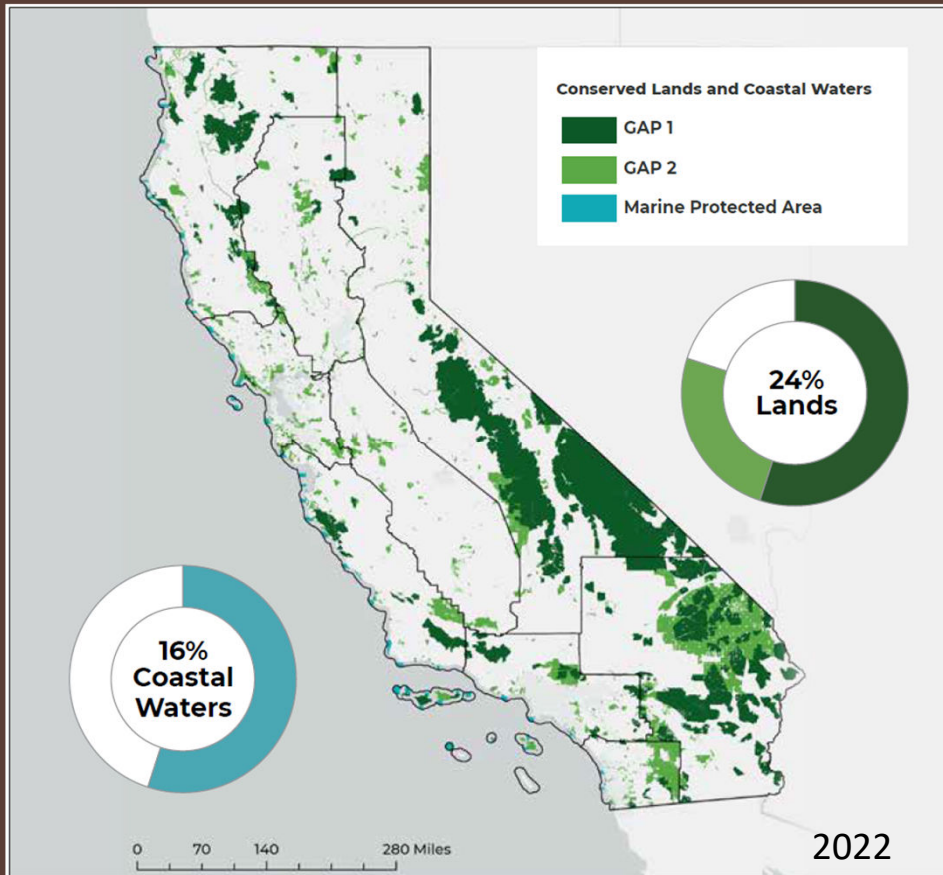
\*At a ground depth of one meter  
Sources: IPCC; NASA



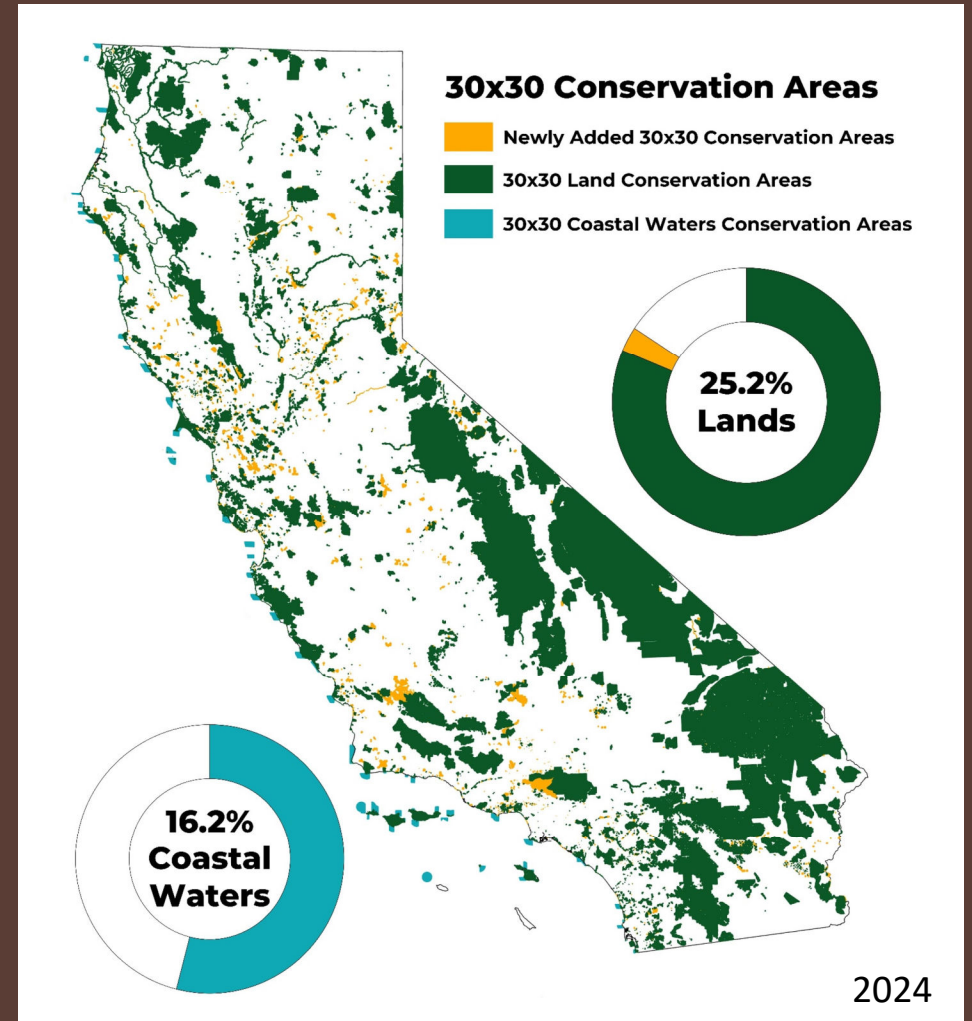
# Conservation Framework

- Core Commitments and Key Principles
  - Advance Justice, Equity, Diversity and Inclusion
  - Strengthen Tribal Partnerships
  - Protect our Economic Prosperity, Clean Energy Resources, and Food Supply





1.2 million acres added since 2022!



# Key Strategies to Achieve 30x30

- ✓ Land acquisitions
- ✓ Voluntary conservation easements
- ✓ Enhanced protection of existing public lands
- ✓ Habitat Restoration
- ✓ Mitigation

# Key Strategies to Achieve 30x30

- ✓ Land acquisitions
- ✓ Voluntary conservation easements
- ✓ Enhanced protection of existing public lands
- ✓ Habitat Restoration
- ✓ Mitigation



\$1 billion for conservation and restoration projects statewide

- 
- The image shows a wide, shallow river channel with a rocky and sandy bed. The water is clear and flows through a landscape of dry, brownish hills and grasslands. In the background, there are more hills and a clear sky. The foreground shows a mix of green grass and brown patches, indicating a restored natural habitat.
- River restoration/dam removal
  - Wildlife crossings and connectivity
  - Forest and grassland health projects
  - Land protection
  - Conservation easements on private land
  - Ancestral land return



A wide-angle photograph of a desert landscape. In the foreground, a dirt path leads towards the right. The middle ground is filled with dry, yellowish-brown brush and several large, rounded boulders. A prominent Joshua tree stands in the center-right. The background shows more boulders and a clear blue sky with some light clouds. The lighting suggests late afternoon or early morning.

Proposition 4: \$1.2 billion for conservation  
and nature based climate projects





# 30x30 CALIFORNIA



[Californianature.ca.gov](http://Californianature.ca.gov)  
[wcb.ca.gov](http://wcb.ca.gov)

