



Legal and Policy Instruments to Access and Implement Environmental Justice in the United States

June 2024

Amanda M. Hauff, Senior Advisor on Environmental Justice
EPA Office of International and Tribal Affairs



Overview

- Whole-of-Government Approach
- EPA Legal Tools to Advance Environmental Justice
- EPA Technical Guidance to Advance Environmental Justice in Regulatory Analysis
- The Health Impact Assessment Resource and Tool Compilation
- Environmental Justice Screening and Mapping Tools
- Environmental Justice Grants, Funding and Technical Assistance



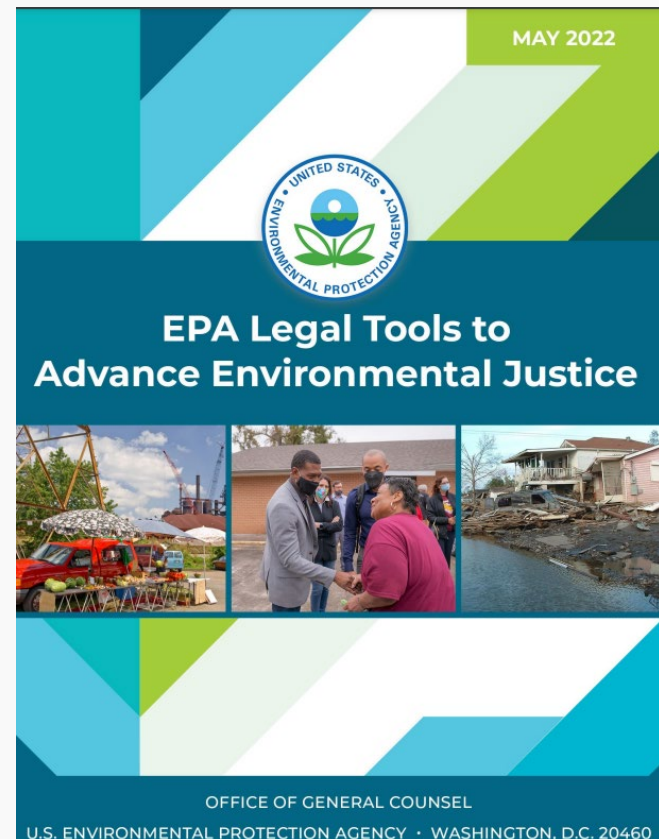
Whole-of-Government Approach

White House Environmental Justice Interagency Council	White House Environmental Justice Advisory Council
Justice40 Initiative	Environmental Justice Scorecards
Environmental Justice Strategic Plans	Environmental Equity and Justice



EPA Legal Tools to Advance Environmental Justice (May 2022)

- Highlights environmental and civil rights statutes EPA implements to achieve the agency's mission to protect human health and the environment for all communities and persons and to ensure that environmental justice and equity agendas are integrated throughout the agency's policies, programs, and activities.
- Helps EPA decisionmakers and partners understand their authorities to consider and address environmental justice and equity in decision-making, and to promote meaningful engagement.





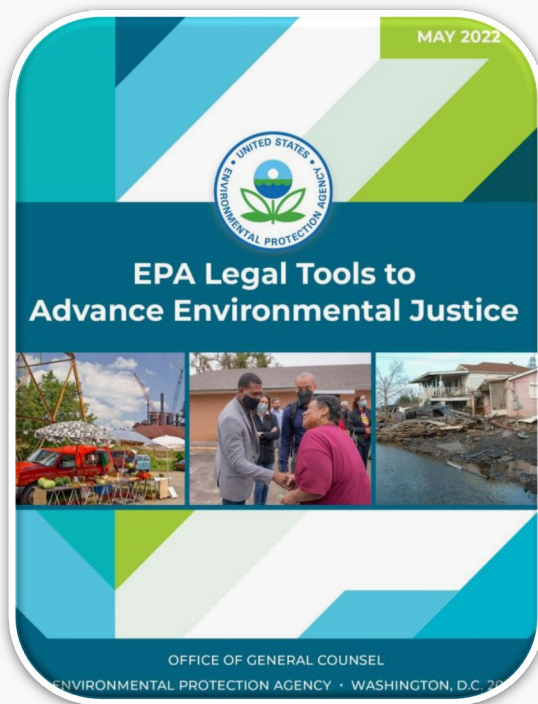
EJ Legal Tools at a Glance

Identifies legal
authorities to advance
environmental justice

- Chapter One: Clean Air Programs
- Chapter Two: Water Programs
- Chapter Three: Solid Waste and Emergency Response Programs
- Chapter Four: Pesticides and Toxics Programs
- Chapter Five: Tribal Programs
- Chapter Six: Environmental Review Programs
- Chapter Seven: Civil Rights in Federal Assistance Programs
- Chapter Eight: Grants, Assistance Agreements, and Procurement
- Chapter Nine: Freedom of Information Act



Cumulative Impacts Addendum



- EJ Legal Tools contains a limited discussion of cumulative impacts authorities



- The Addendum further analyzes where EPA has authority to address cumulative impacts to communities with EJ concerns



Technical Guidance for Assessing Environmental Justice in Regulatory Analysis

Technical Guidance for
Assessing Environmental
Justice in Regulatory Analysis



DRAFT 2023

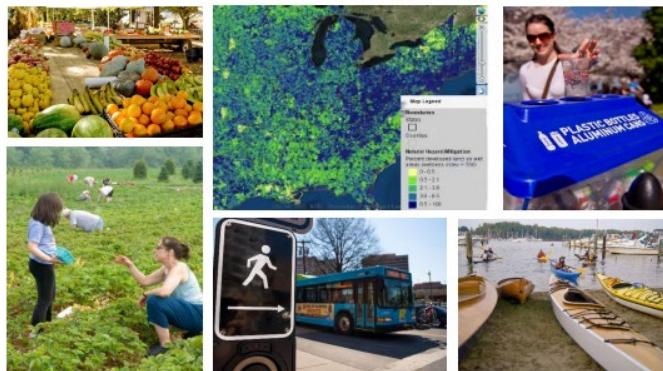


- Designed to help EPA analysts evaluate potential environmental justice concerns associated with EPA regulatory actions.
- Directs analysts to assess whether EJ concerns exist prior to the rulemaking and whether such concerns are exacerbated or mitigated for each regulatory option under consideration.
- Revision to be published in 2024.



EPA/600/R-15/330
September 2016
www.epa.gov/research

The Health Impact Assessment (HIA) Resource and Tool Compilation: A Comprehensive Toolkit for New and Experienced HIA Practitioners in the U.S.



Office of Research and Development
National Exposure Research Laboratory

- The Health Impact Assessment Resource and Tool Compilation is a free, publicly-accessible compilation of tools and resources being developed by EPA that can be utilized by HIA practitioners at all levels of experience to guide them through the HIA process.

Health Impact Assessments:

- Determine the potential effects of a proposed decision on the health of a population and the distribution of those effects within the population;
- Consider input from stakeholders, including those impacted by the decision;
- Use different types of qualitative and quantitative evidence and analytical methods;
- Are flexible based on available time and resources; and
- Provide evidence and recommendations to decision-makers in a timely manner.



Environmental Justice Screening and Mapping Tools

Climate and Economic Justice Screening Tool

Search for an address, city, state or ZIP

How to use the map:

Zoom in $+$, search 🔍 , or locate yourself 📍 and select to see information about any census tract.

Things to know:

The tool uses census tracts 🗺 . Census tracts are a small unit of geography. They generally have populations 👤 of between 1,200 - 8,000 people.

Communities that are disadvantaged live in tracts that experience burdens. These tracts are highlighted 🟡 on the map.

The tool ranks most of the burdens using percentiles 📊 . Percentiles show how much burden each tract experiences when compared to other tracts.

Thresholds 📏 , or cutoffs, are used to determine if communities in a tract are disadvantaged. Certain burdens use percentages 📊 or a simple yes/no 🗒 .

EJScreen

EPA EJScreen EPA's Environmental Justice Screening and Mapping Tool (Version 2.0)

Compare to US Compare to State

Environmental Justice Indexes

- PM 2.5
- Ozone
- Diesel PM**
- Air Toxics Cancer Risk
- Air Toxics Respiratory HI
- Traffic Proximity
- Lead Paint
- Superfund Proximity
- RMP Proximity
- Hazardous Waste Proximity
- Wastewater Discharge
- Underground Storage Tank

Pollution and Sources

Socioeconomic Indicators

Climate Change Data

Critical Service Gaps

Health Disparities

NP, ERI, HERE, Garmin, SafeGraph, METI/NASA, USGS, EPA, NPS, USDA



Environmental Justice Grants, Funding and Technical Assistance

- Environmental and Climate Justice Program
- EJ Collaborative Problem-Solving Cooperative Agreement Program
- EJ Government-to-Government Program
- EJ Thriving Communities Grantmaking Program & Technical Assistance Centers

